

DRAWING NUMBER  
**48/25**

# BOCA WOODS COUNTRY CLUB PLAT 4

A PART OF BOCA WOODS COUNTRY CLUB, A P.U.D.  
SITUATE IN SECTIONS 23 AND 24, TOWNSHIP 47 SOUTH, RANGE 41 EAST,  
PALM BEACH COUNTY, FLORIDA, BEING A REPLAT OF A PORTION OF  
FLORIDA FRUIT LANDS COMPANY'S SUBDIVISION NO. 2,  
AS RECORDED IN PLAT BOOK 1, PAGE 102.

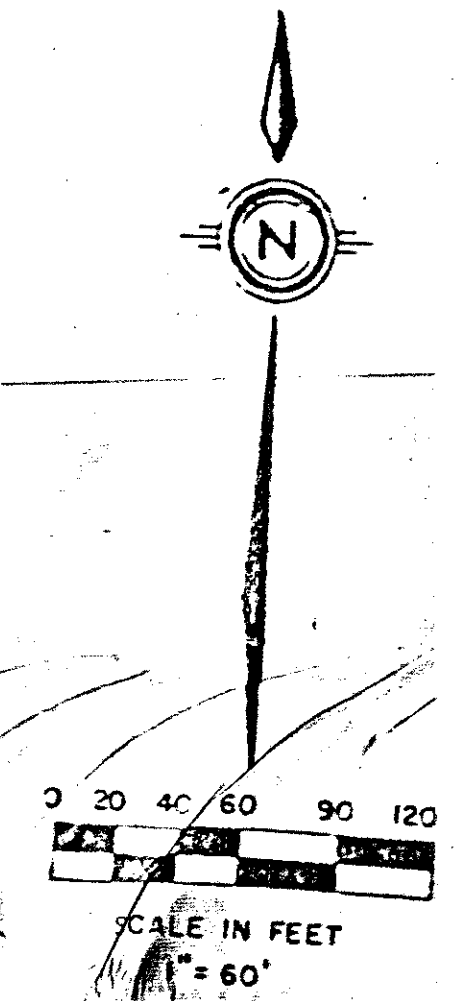
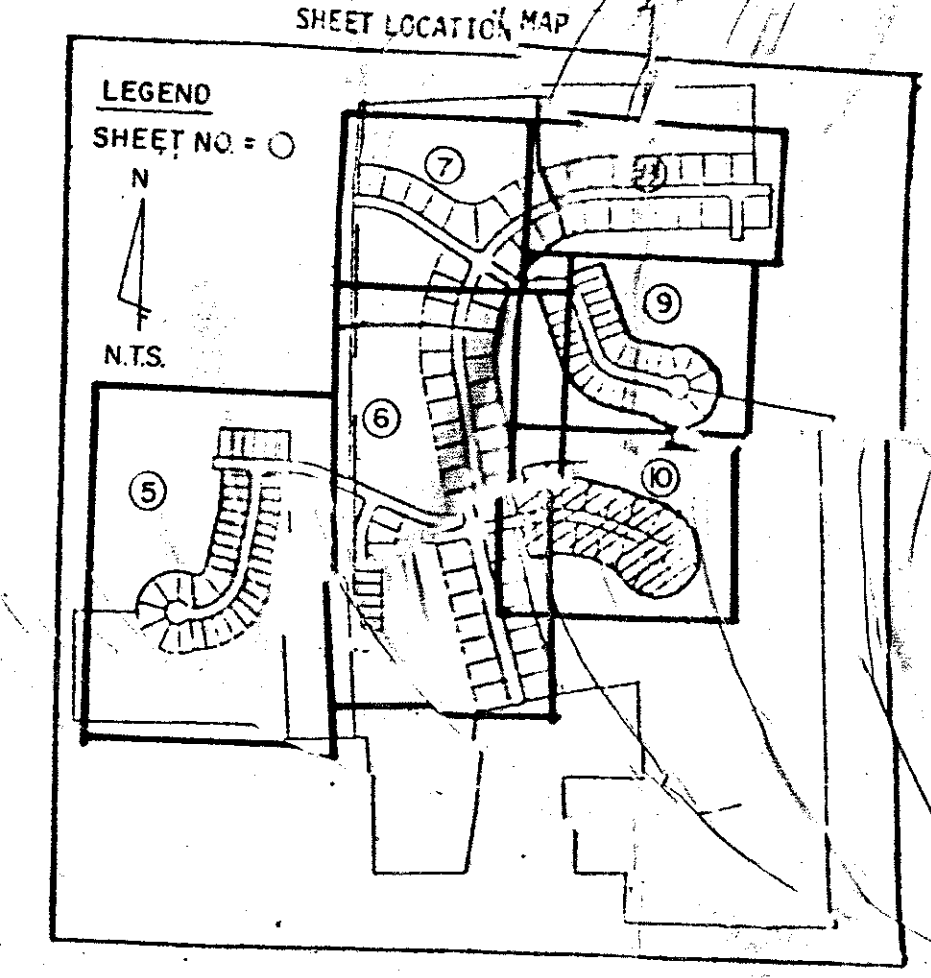
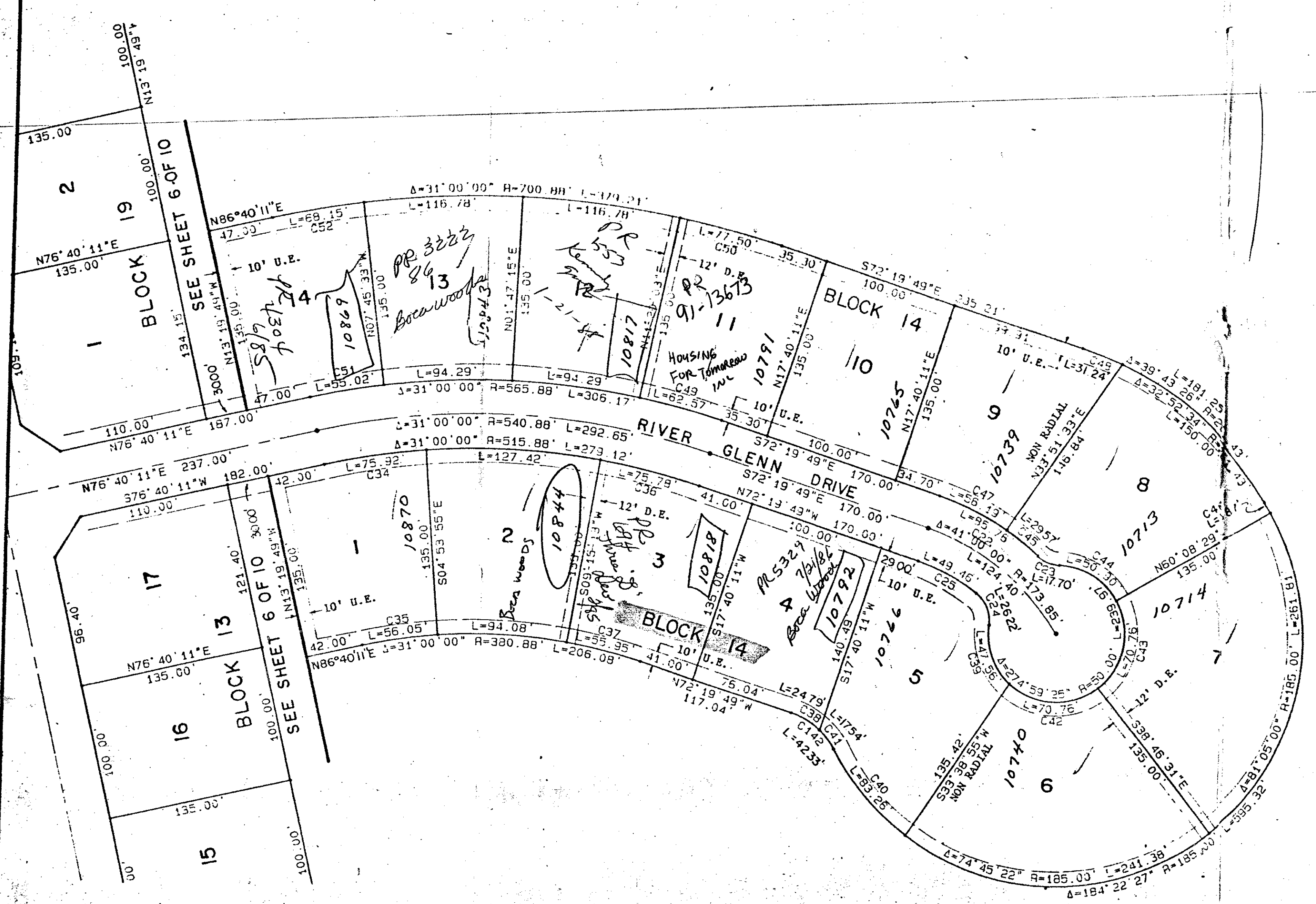
SHEET 10 OF 10

STATE OF FLORIDA  
COUNTY OF PALM BEACH  
THIS PLAT WAS FILED  
RECORD AT \_\_\_\_\_ DAY \_\_\_\_\_  
THIS \_\_\_\_\_ DAY \_\_\_\_\_  
AD, 1984 AND DULY  
IN PLAT BOOK \_\_\_\_\_  
AND \_\_\_\_\_  
BY: JOHN B. DUNKLE, C.  
CIRCUIT COURT

DRAWING NUMBER

DRAWING NUMBER

DRAWING NUMBER



**SIDEWALK REQUIRED**

NO.	DELTA	RADIUS	LENGTH	NO.	DELTA	RADIUS	LENGTH	NO.	DELTA	RADIUS	LENGTH	NO.	DELTA	RADIUS	LENGTH	NO.	DELTA	RADIUS	LENGTH									
C1	90°00'00"	254.32	16.26	C24	60°06'08"	25.00	26.22	C47	16°11'22"	198.85	35.49	C70	2°34'50"	730.90	35.62	C93	16°38'37"	36.08	10.45	C116	11°17'42"	250.00	49.29	C139	11°32'13"	25.00	5.03	
C2	90°00'00"	25.00	39.27	C25	19°02'17"	148.85	49.46	C48	6°50'52"	261.43	31.24	C71	2°34'50"	655.90	29.54	C94	46°20'16"	119.32	96.50	C117	19°49'38"	175.00	60.56	C140	23°45'29"	120.00	49.76	
C3	90°00'00"	25.00	39.27	C26	90°00'00"	25.00	39.27	C49	6°20'08"	565.88	62.57	C72	10°18'03"	605.90	108.93	C95	41°24'23"	36.08	26.07	C118	27°53'24"	50.00	24.34	C141	44°05'53"	55.00	42.33	
C4	22°55'10"	221.64	88.66	C27	3°17'06"	29.99	1.72	C50	6°20'08"	700.88	77.50	C73	12°11'25"	470.90	100.19	C96	20°36'30"	150.72	30.71	C119	1°44'28"	250.00	54.21	C142	44°05'53"	55.00	42.33	
C5	73°23'54"	20.00	25.62	C28	3°39'49"	284.32	39.00	C51	5°34'15"	700.88	88.15	C74	5°33'50"	605.90	58.84	C97	20°36'30"	150.72	54.21	C120	38°56'18"	50.00	33.98	C143	22°55'10"	95.54	39.66	
C6	22°55'10"	271.64	108.66	C29	39°00'00"	246.64	389.73	C52	75°72'54"	470.90	111.40	C75	5°33'50"	470.90	45.73	C98	27°41'51"	150.72	72.86	C121	38°56'31"	50.00	33.98					
C7	90°00'00"	25.00	39.27	C30	22°55'10"	246.64	389.73	C53	6°05'11"	470.90	102.11	C76	2°13'12"	294.32	11.40	C100	22°55'10"	95.64	38.66	C122	38°56'31"	175.00	118.94					
C8	90°00'00"	25.00	39.27	C31	11°07'54"	299.99	515.88	C54	10°32'03"	605.90	70.51	C80	13°36'42"	294.32	69.92	C103	0°55'20"	720.86	58.07	C123	38°56'31"	50.00	33.98					
C9	42°03'42"	25.00	39.27	C32	3°17'06"	29.99	1.72	C55	12°25'25"	470.90	18.09	C81	2°13'12"	294.32	6.56	C104	4°36'57"	595.86	48.00	C124	38°56'31"	50.00	33.98					
C10	56°47'46"	25.00	39.27	C33	3°17'06"	29.99	1.72	C56	12°25'25"	470.90	18.09	C82	2°13'12"	294.32	11.40	C105	4°36'57"	595.86	58.07	C125	38°56'31"	50.00	33.98					
C11	90°00'00"	25.00	39.27	C34	8°25'54"	380.88	55.95	C60	5°58'57"	655.90	93.16	C83	2°13'12"	120.00	3.09	C107	0°55'20"	720.86	48.00	C126	38°56'31"	50.00	33.98					
C12	90°00'00"	25.00	39.27	C35	8°25'54"	380.88	55.95	C61	11°30'25"	463.85	75.02	C86	1°28'36"	120.00	3.09	C109	0°55'20"	720.86	48.00	C127	38°56'31"	50.00	33.98					
C13	88°56'53"	25.00	39.27	C36	8°24'58"	380.88	55.95	C62	9°16'00"	598.85	96.86	C85	16°05'25"	50.00	14.71	C114	8°05'16"	375.00	21.02	C135	6°21'25"	545.86	46.69					
C14	90°00'00"	25.00	39.27	C37	8°24'58"	380.88	55.95	C63	9°16'00"	598.85	96.86	C85	16°05'25"	50.00	14.71	C114	8°05'16"	375.00	21.02	C135	6°21'25"	545.86	46.69					
C15	90°00'00"	25.00	39.27	C38	25°49'20"	55.00	24.79	C64	11°30'25"	463.85	75.02	C86	1°28'36"	120.00	3.09	C109	0°55'20"	720.86	48.00	C128	5°26'43"	200.00	19.01					
C16	90°00'00"	25.00	39.27	C39	54°30'08"	50.00	47.56	C62	9°16'00"	598.85	96.86	C85	16°05'25"	50.00	14.71	C114	8°05'16"	375.00	21.02	C135	6°21'25"	545.86	46.69					
C17	91°13'59"	25.00	39.27	C40	8°24'58"	380.88	55.95	C60	5°58'57"	655.90	93.16	C83	2°13'12"	120.00	3.09	C107	0°55'20"	720.86	48.00	C127	38°56'31"	50.00	33.98					
C18	48°11'23"	25.00	21.03	C41	18°15'33"	55.00	17.54	C64	9°29'39"	157.09	87.39	C88	16°44'12"	50.00	14.71	C114	8°05'16"	375.00	21.02	C135	6°21'25"	545.86	46.69					
C19	48°11'23"	25.00	21.03	C42	81°05'00"	50.00	70.76	C65	31°52'31"	25.00	79.75	C90	24°25'54"	120.00	35.05	C112	3°12'41"	250.00	14.01	C136	2°32'46"	420.86	18.70					
C20	91°13'59"	25.00	39.27	C44	58°19'19"	50.00	50.90	C67	29°05'22"	157.09	87.39	C88	16°44'12"	50.00	14.71	C114	8°05'16"	375.00	21.02	C135	6°21'25"	545.86	46.69					
C21	90°00'00"	25.00	39.27	C44	8°31'11"	198.85	29.57	C68	0°19'40"	790.90	4.52	C91	7°01'17"	120.00	14.71	C114	8°05'16"	375.00	21.02	C135	6°21'25"	545.86	46.69					
C22	24°42'33"	198.85	85.76	C45	8°31'11"	198.85	29.57	C68	0°19'40"	790.90	4.52	C91	7°01'17"	120.00	14.71	C114	8°05'16"	375.00	21.02	C135	6°21'25"	545.86	46.69					
C23	40°33'33"	25.00	17.70	C46	2°44'52"	198.85	8.87	C69	44°28'27"	25.00	19.41	C92	11°39'44"	119.32	24.29	C115	2°24'07"	175.00	7.34	C138	2°32'46"	545.86	24.26					

0215-307

48/25

Meridian Surveying and mapping  
WEST PALM BEACH, FLORIDA  
DRAWN: M.E.H. DATE: JAN 1984  
CHECKED: SCALE: 1" = 60'  
BOCA WOODS COUNTRY CLUB PLAT 4